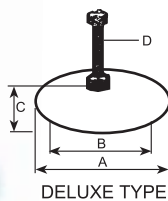




# Shock Absorber

## DELUXE TYPE



## Special Features

Preventing shock & reducing noise. low bed design.  
Easy installation. Simple adjustment. High durability.

## Application

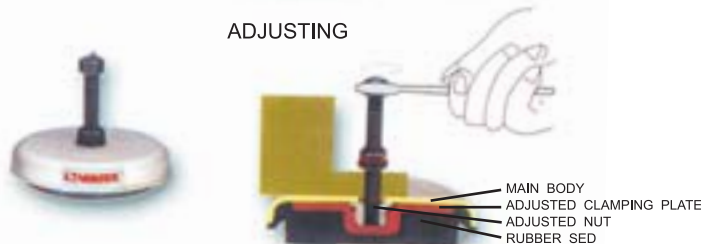
Various general working machines, metal work piece processing machine, production machine, special machine, measuring equipment, testing machine.

Electrical generator, air compressor, etc.

ADJUSTABLE RANGE 6-12 mm

Unit:mm

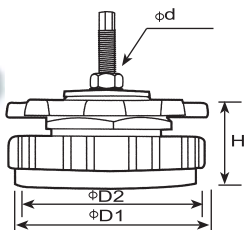
## ADJUSTING



DER NO.	A	B	C	DxL	LOAD	WEIGHT	CODE NO.
TK-90	90	50	32	12M-100	500kg	0.8kg	7001-000
TK-120	120	90	35	12M-100	1000kg	1.4kg	7001-001
TK-160	160	130	38	16M-110	1500kg	2.8kg	7001-002
TK-200	200	170	45	20M-120	3500kg	4.4kg	7001-003

Features : Easy to operate. shock-absorbent, reduces machine noise includes adjustment, and assures production accuracy.

## STANDARD TYPE

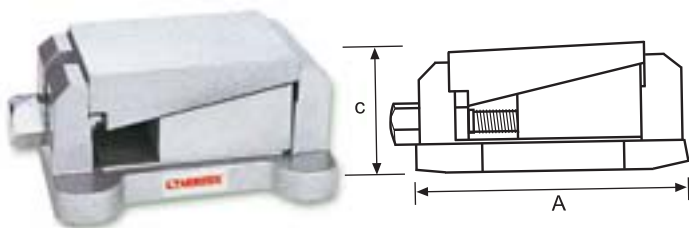


Unit:mm

ORDER NO.	D1	D2	H	∅	LOAD KGS	Adjustment HEIGHT	N.W. KGS	CODE NO.
SB-4	100	90	60	12X50	500	25	2	7001-031
SB-6	150	135	95	16X110	1000	40	5	7001-032
SB-8	200	180	100	20X120	2500	40	8	7001-033
SB-10	250	230	125	24X180	4000	40	12	7001-034

SUITABLE FOR : machine tools, molding machine, printing machine, CNC lathe, grinding machines, drilling machines, milling machines.

## HEAVY DUTY TYPE



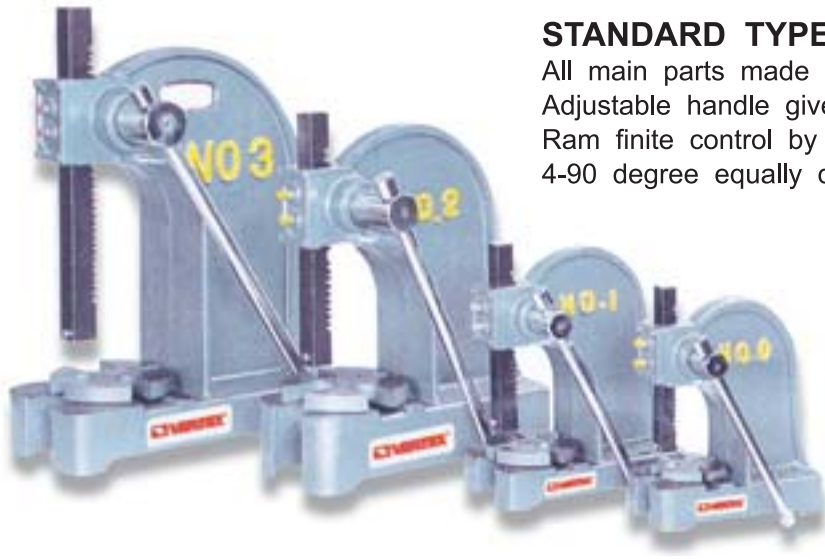
Unit:mm

ORDER NO.	A	B	C	LOAD KGS	Adjustment HEIGHT	N.W. KGS	CODE NO.
SC-1	130	96	66	700	4MM	4	7001-060
SC-2	174	143	80	1500	5MM	8.8	7001-061
SC-3	217	165	101	2500	6MM	16	7001-062

SUITABLE FOR : CNC lathe, milling machines, cutting machines, grinding machines.



# Arbor Press



## STANDARD TYPE

All main parts made of ductile cast iron.  
Adjustable handle gives convenient handle positioning.  
Ram finite control by smooth gears.  
4-90 degree equally divided slotted round table.

ORDER NO.	VAR-0	VAR-1	VAR-2	VAR-3	VAR-5
OVERALL HEIGHT	254mm(10")	304mm(12")	432mm(17")	546mm(21")	820mm(34")
STROKE	114mm	133mm	215mm	317mm	460mm
BASE	102x240mm	127x273mm	162x410mm	216x457mm	250x660mm
CENTER TO KNEE	84	98	144	137	140
ARBOR PUNCH <input type="checkbox"/>	19x19x190	25x25x2	32x32x2	38x38x456	45x45x67
WEIGHT (kgs)	8.5	12	27.5	50	140
CODE NO.	7002-100	7002-101	7002-102	7002-103	7002-104



## RATCHET LEVERS TYPE

This arbor press with all standard's feature. But operated with a ratchet device that will permit you to use the lever in the most convenient position, the lever has a counterweight for quick return after which the down stroke handwheel will advance the ram to the work quickly.

Ratchet Type Arbor Press available-No.2/3/5 only.  
The size is same as VAR-2, 3, 5

DER NO.	VARR-3	VARR-5
G.W. KGS	65	162
CODE NO.	7002-131	7002-132



# Multi-Spindle Drill Head



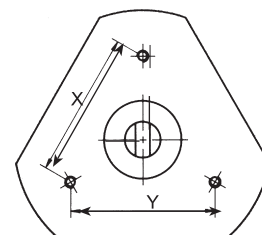
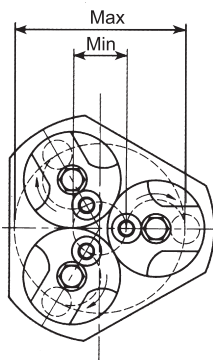
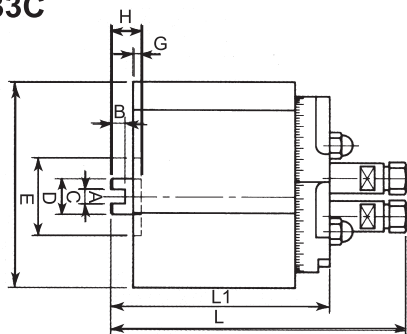
- The helical driving gears give high torque transmission effect.
- The Drill head accommodates high running speed up to 5500 RPM.
- Reversible spindle running permits it ideal for both drilling and tapping operations.



**V33C**  
3 SPINDLE & CIRCULAR TYPE

**V40C**  
4 SPINDLE & CIRCULAR TYPE

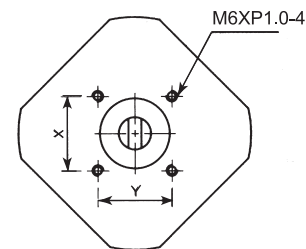
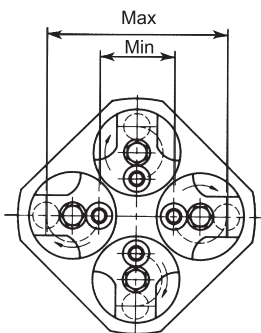
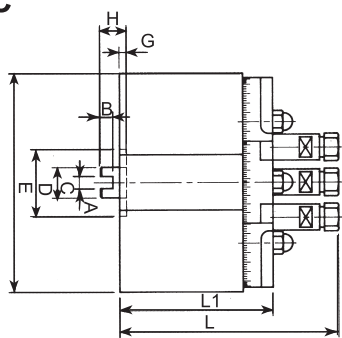
**V33C**



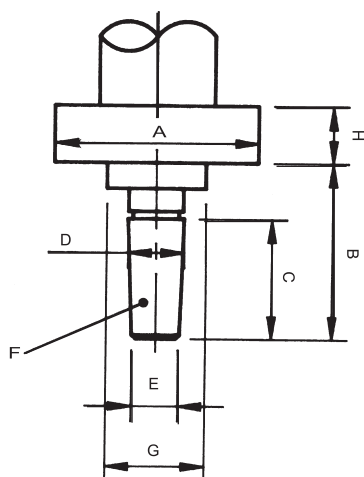
ORDER NO.	A	B	C	D	E	G	H	L	L1	X	Y	ADJ. SPACING		MAX. CAPACITY COLLET RANGE	KGS	CODE NO.
												MIN.	MAX.			
V33C-T7					130			149	109			Ø28	Ø100	ER-11, Ø7-Ø1	5.5	7002-200
V33C-T10	10	10	30	55	155	3	15	152	112	86.6	86.6	Ø32	Ø116	ER-16, Ø10-Ø1	10.5	7002-201
V33C-T12					172			162	122			Ø38	Ø138	ER-20, Ø13-Ø1	13	7002-202
V40C-T7					145			152	112			Ø42	Ø114	ER-11, Ø7-Ø1	6.5	7002-203
V40C-T10	10	10	30	55	172	3	15	152	112	70.7	70.7	Ø48	Ø132	ER-16, Ø10-Ø1	12.5	7002-204
V40C-T12					192			162	122			Ø58	Ø158	ER-20, Ø13-Ø1	14	7002-205

THE ER-COLLET IS OPTIONAL

**V40C**



When ordering please provide the dimensions in mm unit on the spindle. This size is for mounting collar using.



F Chuck taper					
No	JT1	JT2	JT6	JT3	JT4
C	21	22.4	26.3	31.3	45
E	8.6	14	16	19.3	26.4

F Chuck taper					
No	B10	B12	B16	B18	B20
C	18	22	29	27	45.5
E	9.4	11.1	14.5	16.2	19.8



# Portable Magnetic Drilling & Tapping Machine



OPTIONAL

**TC-3S**



**TC-6R (S)**



**TC-10R (S)**

OPTIONAL ACCESSORIES : ELECTRIC DRILL  
TC-10D, TC-25D, TC-32D



**TC-12W**



**TC-12S (R)**

MAGNETIC BASE : R IS ROUND  
S IS SQUARE , WHEN YOU ORDER, YOU CAN CHOOSE R OR S

## SPECIFICATIONS

ORDER NO.	Dia of drilling (mm)	Power source		Stroke (mm)	Tuning angle	Shaft forward & backward(mm)	Magnet (mm)	Magnet Holding Power	Height (mm)	N.W. (kg)	CODE NO.
		Voltage(V)	Power(W)								
TC-3S	2-10 ∅	110.220	78	90			100 x 130	450	280	8	7002-301
TC-6S	2-18 ∅	110.220	78	200	330°	20	180 x 105	800	400	18.5	7002-302
TC-6R	2-18 ∅	110.220	78	200	330°	20	150 ∅	800	400	18.5	7002-303
TC-10R	2-25 ∅	110.220	78	250	330°	20	160 ∅	1000	530	26.5	7002-304
TC-10S	2-25 ∅	110.220	78	250	330°	20	105 x 220	1000	530	26.5	7002-305
TC-12W	2-32 ∅	110.220	78	280	50°	20	135 x 260	1500	530	37	7002-306
TC-12S	2-32 ∅	110.220	78	280	330°	20	135 x 260	1500	530	37	7002-307
TC-25D	25MM	110.220									7002-308
TC-32D	32MM	110.220									7002-309
TC-10D	10m/m	110.220									7002-310



# Wet & Dry Vacuum Cleaner

INDUSTRIAL BUSINESS USE



ORDER NO.	CODE NO.
CE-2020	7002-402
CE-2032	7002-403

## AUTO CORD REEL FUNCTION

- VOLTAGE : 110V-240V
- POWER CONSUMPTION : 1000W / 700W
- SUCTION EFFICIENCY : 180W
- MOTOR : 1 MOTOR 2 STAGE
- CAPACITY : 20 / 32L(Stainless steel tank)
- STANDARD ACCESSORIES :  $\varnothing$  32(B)
- G.W : 8 / 9KGS
- PACKING SIZE : 330 x 340 x 670mm



ORDER NO.	CODE NO.
SPCE-1040	7002-405
SPCE-1060	7002-406

- VOLTAGE : 110V-240V
- POWER CONSUMPTION : 2000W
- SUCTION EFFICIENCY : 300W
- MOTOR : 2 MOTOR 2 STAGE
- CAPACITY : 40L / 60L
- STANDARD ACCESSORIES :  $\varnothing$  38(A)
- G.W : 25 / 27KGS
- PACKING SIZE : 405 x 405 x 780 / 890mm

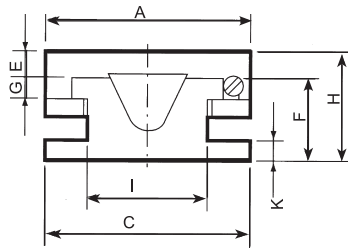


ORDER NO.	CODE NO.
AMT-10.0	7002-404

- VOLTAGE : 110V-240V
- POWER CONSUMPTION : 1000W
- SUCTION EFFICIENCY : 210W
- MOTOR : 1 MOTOR 2 STAGE
- CAPACITY : 40L
- STANDARD ACCESSORIES :  $\varnothing$  38(A)
- G.W : 21KGS
- PACKING SIZE : 405 x 405 x 730mm



# Economic H Type Slide Table



- Material : FC-30
- Precision :  $\pm 0.01 / 100\text{mm}$
- FEATURE : The sliding surfaces are treated by heat-treatment & precision ground The slide used V type.

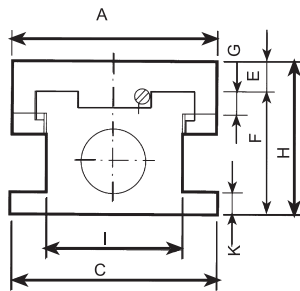
## •Specifications

Unit: mm

ORDER NO.	A x B Table surface	C x D Base area	H	E	F	G	K	I	CYLINDER OF THROUGH HOLE	WEIGHT kgs	CODE NO.
STB-1630	160x200	160x300	90	20	60	17	20	90	U TYPE	19	7002-501
STB-1640	160x200	160x400	90	20	60	20	20	90	U TYPE	22	7002-502
STB-2040	200x300	200x400	120	30	90	20	20	120	U TYPE	38	7002-503
STB-2060	200x300	200x600	120	30	90	20	20	120	U TYPE	48	7002-504
STB-2080	200x300	200x800	120	30	90	20	20	120	U TYPE	60	7002-505
STB-20100	200x300	200x1000	120	30	90	20	20	120	U TYPE	70	7002-506



# Power H Type Slide Table



- Material : FC-30
- Precision :  $\pm 0.01 / 100\text{mm}$
- FEATURE : The sliding surfaces are treated by heat-treatment & precision ground

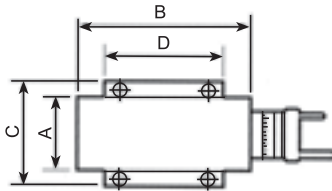
## •Specifications

Unit: mm

ORDER NO.	A x B Table surface	C x D Base area	H	E	F	G	K	I	CYLINDER OF THROUGH HOLE	WEIGHT kgs	CODE NO.
STC-2040	200x300	200x400	150	30	120	20	25	132	65 $\phi$	50	7002-520
STC-2050	200x300	200x500	150	30	120	20	25	132	65 $\phi$	58	7002-521
STC-2060	200x300	200x600	150	30	120	20	25	132	65 $\phi$	65	7002-522
STC-3050	300x350	300x500	188	39	145	25	28	213	75 $\phi$	98	7002-524
STC-3070	300x350	300x700	188	39	145	25	28	213	75 $\phi$	120	7002-525
STC-3080	300x350	300x800	188	39	145	25	28	213	75 $\phi$	135	7002-526

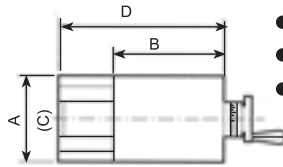


# One Way Acme Thread Slide Table



**ST-75 ST-100 ST-125**

- Material : FC-30
- Precision :  $\pm 0.01 / 100\text{mm}$



**STA-160 STA-165 STA-200  
STA-205 STA-300 STA-305**

- Material : FC-30
- Precision :  $\pm 0.01 / 100\text{mm}$
- FEATURE : The sliding surfaces are treated by heat-treatment & precision ground

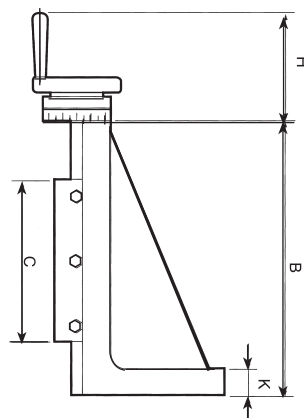
## •Specifications

Unit: mm

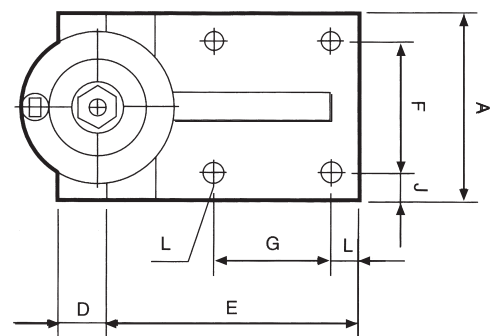
ORDER NO.	A x B Table surface	C x D Base area	Stroke	Total height	Dial graduation	WEIGHT kgs	CODE NO.
<b>ST-75</b>	75x180	105x155	75	60	2.5x0.02	6.5	7002-540
<b>ST-100</b>	100x235	140x150	100	70	2.5x0.02	9.5	7002-541
<b>ST-125</b>	125x300	165x255	125	80	4.0x0.02	18.5	7002-542
<b>STA-160</b>	160x200	160x300	100	90	4.0x0.02	20.0	7002-543
<b>STA-165</b>	160x200	160x400	200	90	4.0x0.02	23.0	7002-544
<b>STA-200</b>	200x300	200x400	100	120	4.0x0.02	38.0	7002-545
<b>STA-205</b>	200x300	200x600	300	120	4.0x0.02	50.0	7002-546
<b>STA-300</b>	300x350	300x500	150	188	4.0x0.02	98.0	7002-547



# Vertical Dovetail Slide Table



- Material : FC-30
- Precision :  $\pm 0.01 / 100\text{mm}$
- FEATURE : The sliding surfaces are treated by heat-treatment & precision ground  
Dial graduation 4.0x0.02mm



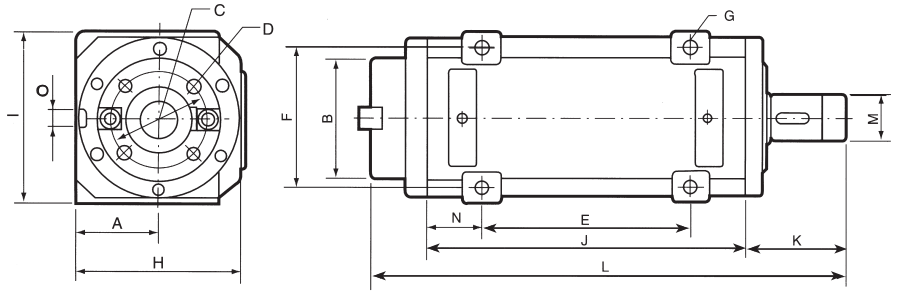
## •Specifications

Unit: mm

ORDER NO.	A	B	C	D	E	F	G	H	I	J	K	L	WEIGHT kgs	CODE NO.
<b>SE-100</b>	100	255	150	25	130	70	60	120	15	15	26	∅10x4	15	7002-560
<b>SE-150</b>	150	385	200	40	185	110	90	120	20	20	35	∅13x4	35	7002-561
<b>SE-200</b>	200	510	250	60	240	160	140	135	20	20	40	∅17x4	67	7002-562
<b>SE-250</b>	250	600	300	60	280	200	160	140	25	25	40	∅17x4	115	7002-563



# Precision Boring / Milling Spindle Head



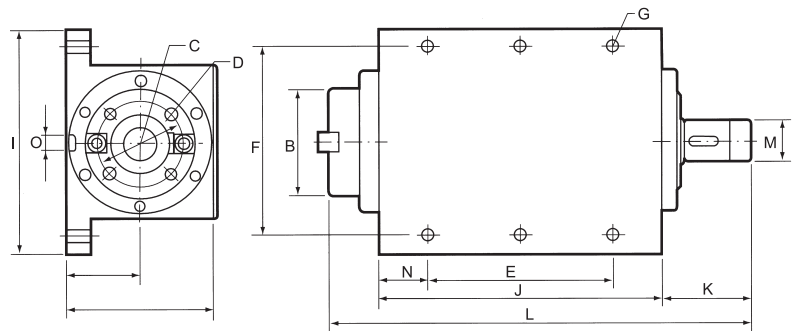
## • Specifications

Unit: mm

ORDER NO.	TAPER	MAX.RPM	A	B	C	D	E	F	G	H	I	J	K	L	M	N	O	WEIGHT kgs	BEARING O.D.	CODE NO.
SH03	MT3	7000	45	∅ 42			80	70	∅ 9-4	90	90	160	75	270	∅ 25	35	16x5	8kg	∅ 62 ∅ 55	7002-600
SH04	MT4	2500	70	∅ 88.882			190	90	∅ 15-4	145	150	280	94	427	∅ 35	45	16x5	36kg	∅ 90	7002-601
SH30	NT30	3000	55	∅ 69.832	∅ 54	M10xP1.5-4	120	90	∅ 11-4	114	114	200	72	317	∅ 30	40	16x5	18kg	∅ 75	7002-603
SH40	NT40	2500	70	∅ 88.882	∅ 66.7	M12xP1.75-4	190	150	∅ 15-4	170	184	280	106	427	∅ 35	45	16x5	39kg	∅ 90	7002-605
SH50	NT50	2000	85	∅ 128.57	∅ 101.6	M16xP2.0-4	220	150	∅ 15-4	170	184	340	106	500	∅ 50	60		75kg	∅ 115	7002-607



# Precision Boring / Milling Spindle Head



## • Specifications

Unit: mm

ORDER NO.	TAPER	MAX.RPM	A	B	C	D	E	F	G	H	I	J	K	L	M	N	O	WEIGHT kgs	BEARIN O.D.	CODE NO.
SH30A	NT30	3000	77	∅ 69.832	∅ 54	M10xP1.5-4	160	140	∅ 11-6	133	176	200	72	317	∅ 30	10	16x5	22kg	∅ 75	7002-620
SH30B	NT30	9000	77	∅ 69.832	∅ 54	M10xP1.5-4	160	140	∅ 11-6	133	176	200	72	317	∅ 30	10	16x5	22kg	∅ 75	7002-621
SH40A	NT40	2500	77	∅ 88.882	∅ 66.7	M12xP1.75-4	180	170	∅ 11-6	147	200	220	94	367	∅ 35	20	16x5	45kg	∅ 90	7002-622
SH40B	NT40	8000	77	∅ 88.882	∅ 66.7	M12xP1.75-4	180	170	∅ 11-6	147	200	220	94	367	∅ 35	20	16x5	45kg	∅ 90	7002-623





# Drilling Head Units

DH-TYPE



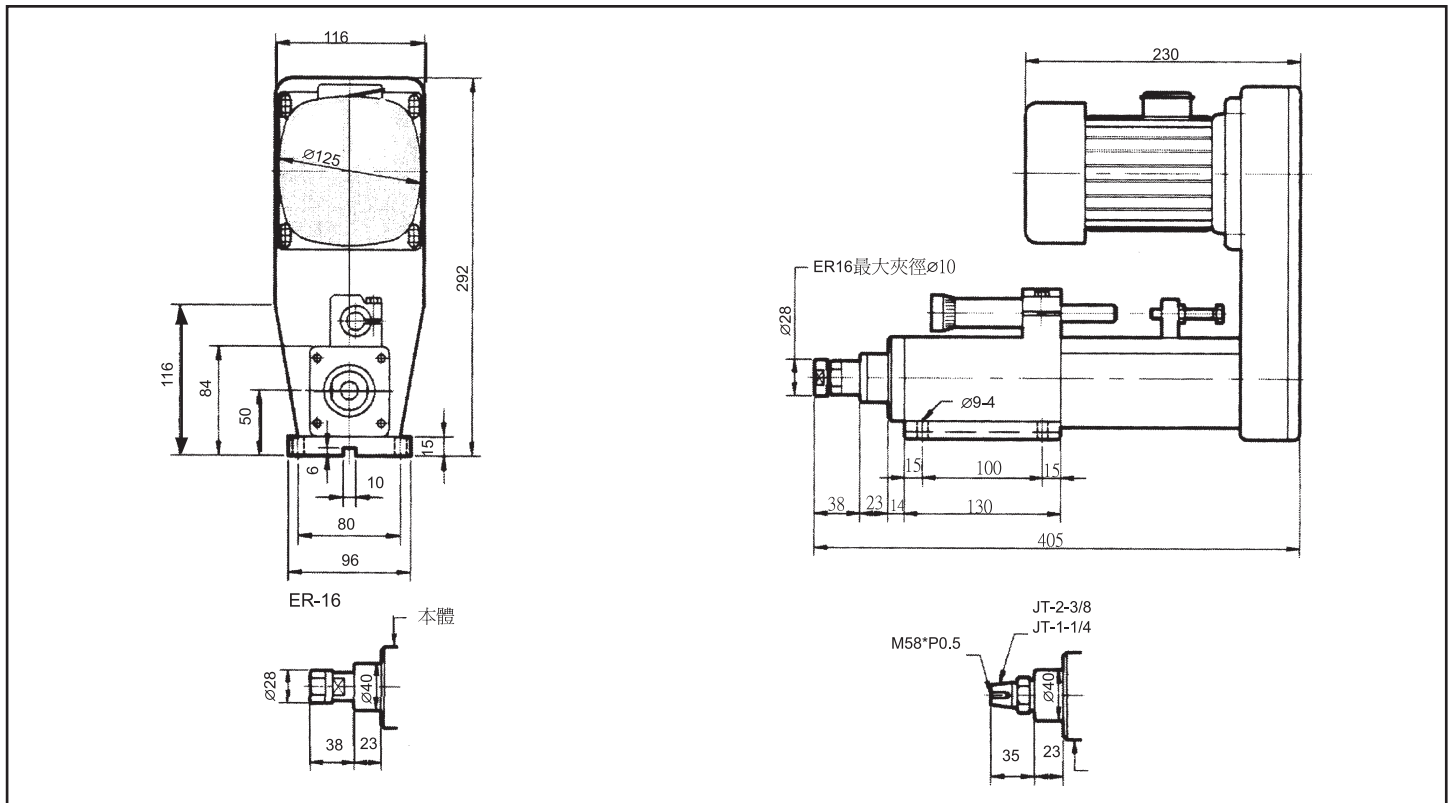
## WHEN YOU ORDER, YOU MUST CONFIRM

1. THE SPINDLE SIZE (JT-6, ER- OR MT-3)
2. 3PH MOTOR AND POWER, VOLTAGE & PHASE
3. THE MATERIAL OF WORKPIECE
4. THE MATERIAL AND DIA. OF CUTTING TOOL
5. THE TRAVEL POWER ON MACHINE IS HYDRAULIC OR AIR.
6. FIXED PRM.

## SPECIFICATION

ORDER NO.	TRAVEL	CAPACITY	MAX. RPM	POWER	CENTER HEIGHT	MOTOR	HYDRAULIC SPACE	WEIGHT kgs	CODE NO.
DH3 - 60M	60 m/m	6 $\phi$	10000	HYDRAULIC OR AIR	50 $\pm$ 0.02	1/2 HP	12.6 cm <sup>2</sup>	26 kg	7002-700
DH5 - 85M	85 m/m	13 $\phi$	5000	HYDRAULIC OR AIR	70 $\pm$ 0.02	1 HP	21.6 cm <sup>2</sup>	50 kg	7002-701
DH6 - 130M	130 m/m	16 $\phi$	3200	HYDRAULIC	70 $\pm$ 0.02	1 HP	43.2 cm <sup>2</sup>	45 kg	7002-702
DH8 - 150M	150 m/m	25 $\phi$	1500	HYDRAULIC	90 $\pm$ 0.02	2 HP	71.2 cm <sup>2</sup>	70 kg	7002-703
DH9 - 150M	150 m/m	35 $\phi$	1200	HYDRAULIC	90 $\pm$ 0.02	2 HP	71.2 cm <sup>2</sup>	75 kg	7002-704

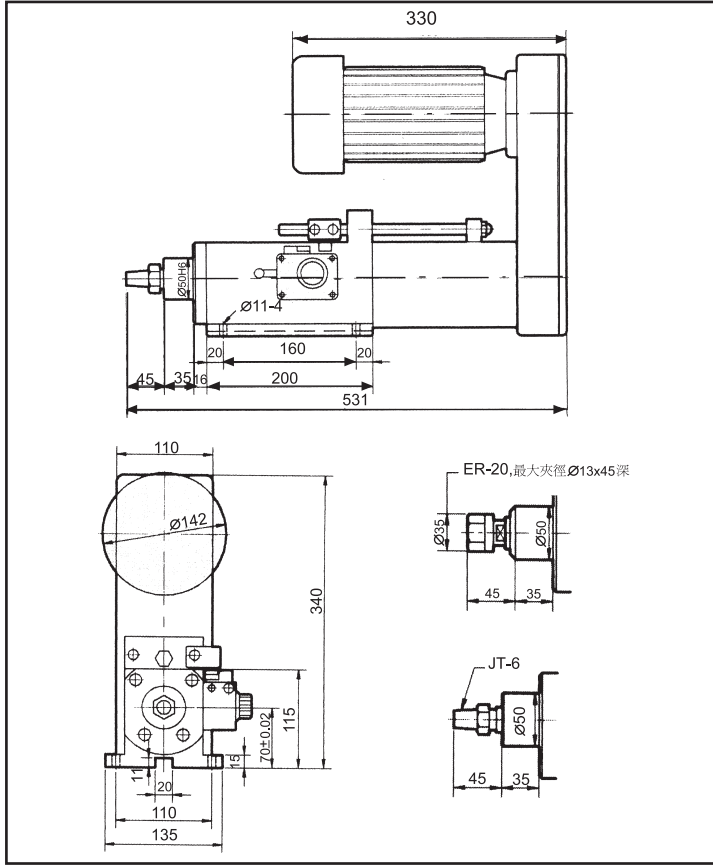
## DRILLING HEAD UNITS DH3 - 60M



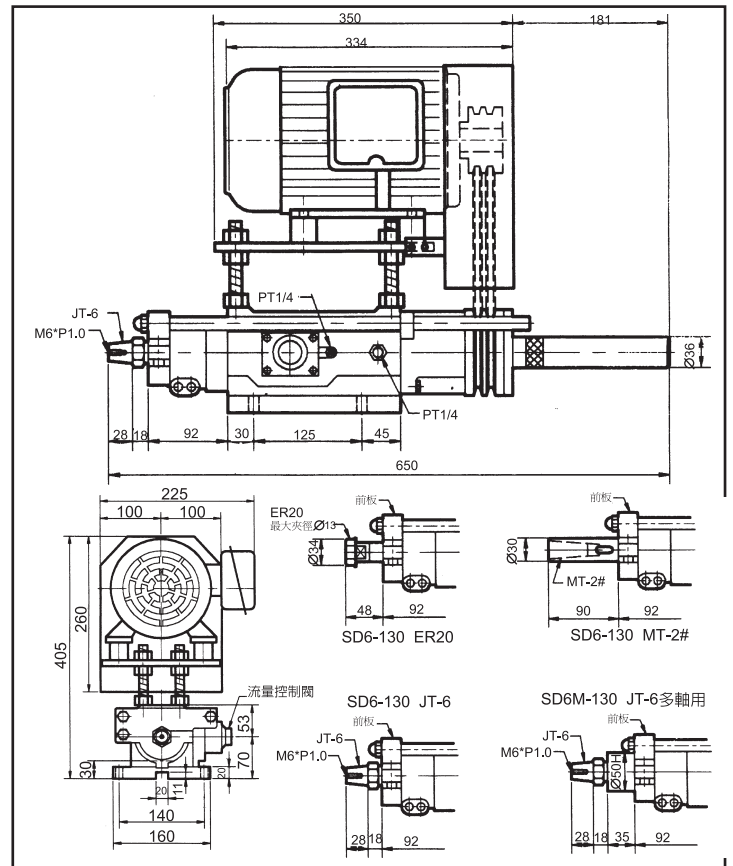


# Drilling Head Units

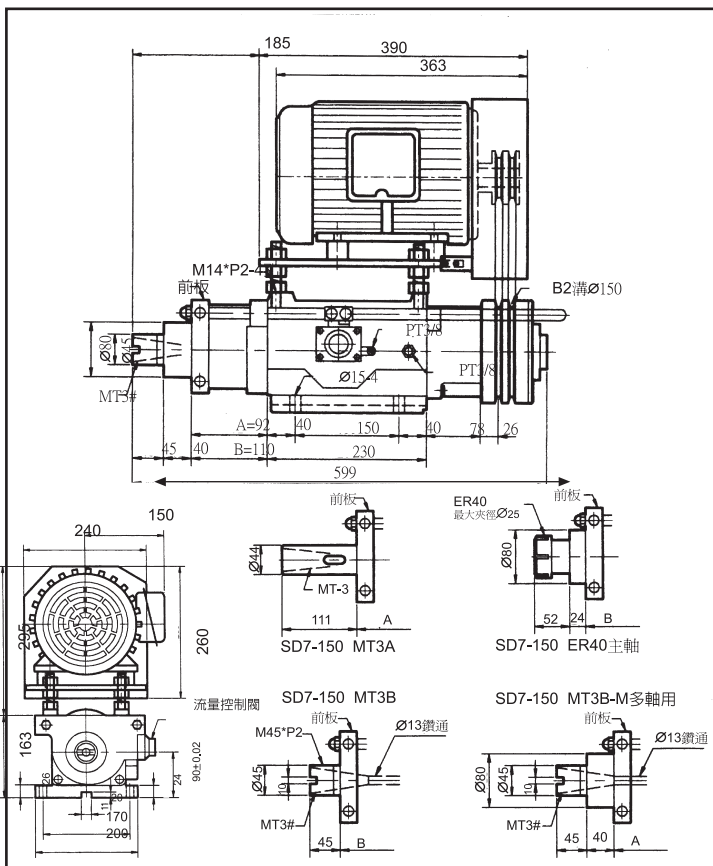
## DRILLING HEAD UNITS DH5 - 85M



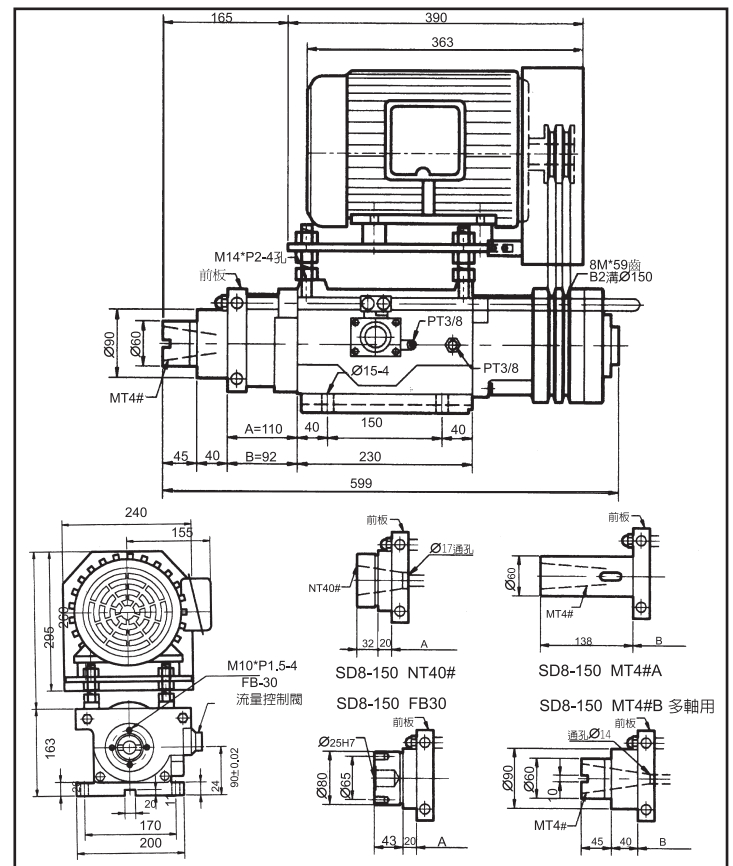
## DRILLING HEAD UNITS DH6 - 130M



## DRILLING HEAD UNITS DH8 - 150M



## DRILLING HEAD UNITS DH9 - 150M





# Tapping Head Units



## WHEN YOU ORDER, PLEASE CONFIRM

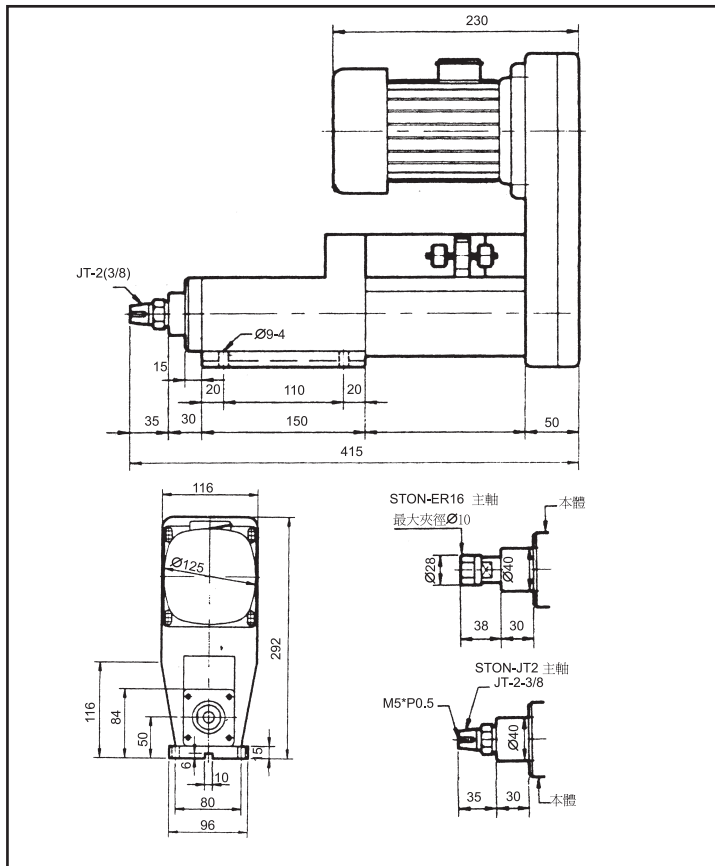
1. ORDER NO.
2. Spindle Size (JT-2, JT-6, ER-16, ER-20, MT-2, MT-3, MT-4, NT-40, TR-20)
3. Tap Size And Pitch.
4. Voltage Number of Phase, Frequency.
5. Fixed R. P. M.
6. If Spindle Revolve Under 400 RPM  
Use Reducer Gear Motor (Option) .

ORDER NO.	SPINDLE STROKE	CAPACITY (S45C)	MIN. PITCH	SPINDLE CENTER	MOTOR	WEIGHT kgs.	CODE NO.
TH-50M	50 m/m	6 $\varnothing$	0.4 m/m	50m/m $\pm$ 0.02	1/2 HP	18kg	7002-801
TH-65M	65 m/m	14 $\varnothing$	0.6 m/m	70m/m $\pm$ 0.02	1 HP	30kg	7002-802
TH-85M	85 m/m	35 $\varnothing$	0.6 m/m	90m/m $\pm$ 0.02	2 HP	70kg	7002-803
TH-90M	90 m/m	45 $\varnothing$	0.6 m/m	90m/m $\pm$ 0.02	2 HP	80kg	7002-804

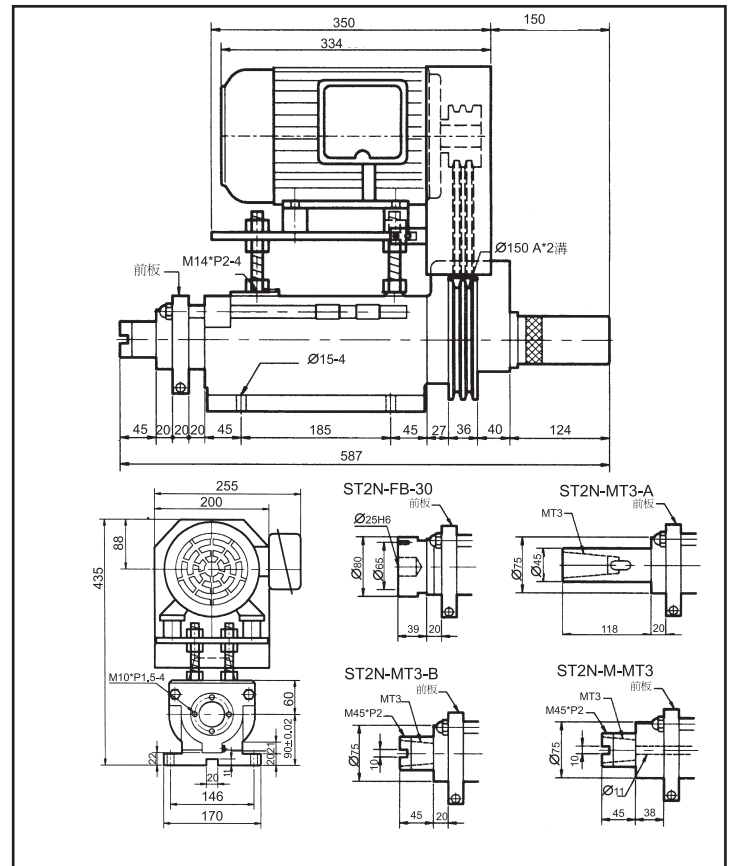


# Tappings Head Units

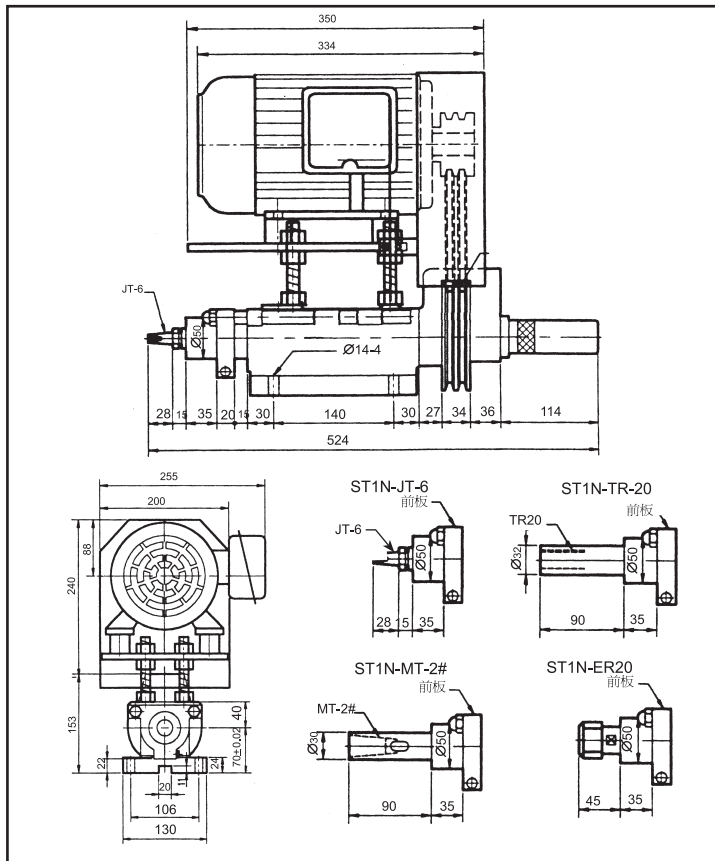
## TAPPINGS HEAD UNITS TH-50M



## TAPPINGS HEAD UNITS TH-85M



## TAPPINGS HEAD UNITS TH-65M



## TAPPINGS HEAD UNITS TH-90M

